

# Autoclavable Labware

Fernbach Flasks  
Erlenmeyer Flasks



Distributed by



www.majorsci.com  
info@majorsci.com

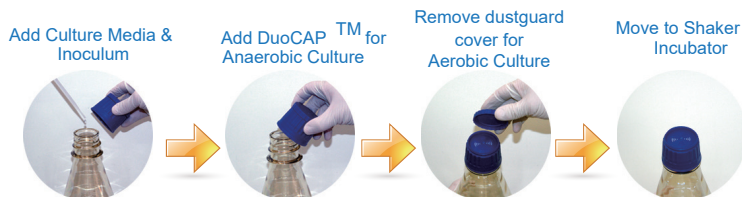
Innovative Life Sciences Tools

Suitable with SI series products



## Polycarbonate Erlenmeyer Flask (Baffled Base) Features:

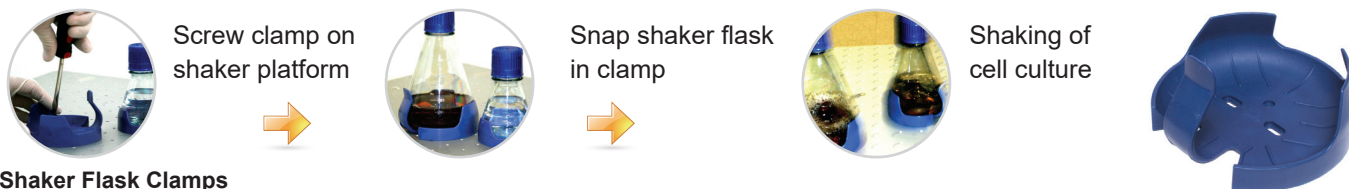
- Ideal replacement for glass and other Erlenmeyer/shaker flasks.
- Patented DuoCAP® allows sterile air exchange or a leak-proof seal.
- Minimize oxidation or pH shifts.
- Perform aerobic/anaerobic culture.
- Available with septum cap for pathogen containment.
- Re-autoclavable, reusable.
- Individually Packed in EZ-Tear bags. Sterile to SAL 10-6
- Choose baffled base flasks when increased levels of oxygenation add mixing are required.



## Sterile/Autoclavable PC Flasks



Flat Base Cat. No.	FPC3000S	FPC2000S	FPC1000S	FPC0500S	FPC0250S	FPC0125S
Baffled Base Cat. No.	FBC3000S	FBC2000S	FBC1000S	FBC0500S	FBC0250S	FBC0125S
Size / Volume	3000mL	2000mL	1000mL	500mL	250mL	125mL
Overhead	20% (600mL)	20% (400mL)	20% (200mL)	20% (100mL)	20% (50mL)	20% (25mL)
Closure	69B	53B		38/430		
Cap Type	Vented DuoCAP®					
Cap Color	Blue					
Neck Diameter	67.25mm	47.50mm		34.50mm		
Material	Flask: Polycarbonate / Cap: Polypropylene and Polyethylene					
Autoclavable	Yes					
Sterile	Yes					
A• Base Diameter	230.5mm	165mm	137mm	105mm	83mm	71mm
B• Height (w/o Cap)	250mm	265mm	204mm	156mm	133mm	105mm
C• Height (w/ Cap)	260mm	276.8mm	215.8mm	165.3mm	142.3mm	114.3mm
Units / Pack	3	6		12		24
Packs/Case (Total Units)	4(12)	4(24)		4(48)	6(72)	6(144)



## Shaker Flask Clamps

TriForest polypropylene shaker clamps are carefully engineered to provide both clipping elasticity and motion resistance in one product. Featuring a non-scratch design, our shaker clamps come in standard blue color accompanied by stainless steel screws and washers. Our clamps fit all industry standard shaking incubators and are autoclavable for reuse.

## Shaker Flask Clamps

Cat. No.	SFC2000	SFC1000	SFC0500	SFC0250	SFC0125
Size	2000mL	1000mL	500mL	250mL	125mL
Width	169.10mm	143.90mm	111.60mm	90.40mm	74.72mm
Height	89.57mm	74.50mm	63.14mm	57.63mm	51.17mm
Material	Polypropylene				
Autoclavable	Yes				
Sterile	No				
Units/Case	48		96		

## Autoclavable Polycarbonate Square Media Bottles

Innovative Life Sciences Tools



Cat. No.	BPC2000	BPC1000	BPC0500	BPC0250	BPC0125	BPC0060	BPC0030
Size / Volume	2000 mL	1000 mL	500 mL	250 mL	125 mL	60 mL	30 mL
Overhead	20% (400mL)	20% (200mL)	20% (100mL)	20% (50mL)	20% (25mL)	20% (12mL)	20% (6mL)
Closure	53B	38/430				24/415	
Cap Type	Standard Cap						
Cap Color	Blue						
Neck Diameter	47.50 mm	34.50 mm				21.50 mm	17.50 mm
Material	Flask: Polycarbonate / Cap: Polypropylene						
Autoclavable	Yes						
Sterile	No						
A • Base Diameter	115.00mm	92mm	73mm	59mm	54.4mm	40mm	38mm
B • Height (w/o Cap)	266.00 mm	213mm	172mm	139mm	103.7mm	80mm	60mm
C • Height (w/ Cap)	271.20 mm	218.7mm	177.7mm	147.7mm	109.5mm	82.1mm	62.1mm
Units / Pack	6	12		24			
Packs/Case (Total Units)	4(24)	4(48)	6(72)	4(96)	6(144)	8(192)	12(288)

## Autoclavable Polycarbonate Boston Round Media Bottles



Cat. No.	RPC1000	RPC0500	RPC0300
Size / Volume	1000 mL	500 mL	300 mL
Overhead	20% (200mL)	20% (100mL)	20% (50mL)
Closure	38/430		
Cap Type	Standard Cap		
Cap Color	Blue		
Neck Diameter	34.50 mm		
Material	Flask: Polycarbonate / Cap: Polypropylene		
Autoclavable	Yes		
Sterile	No		
A • Base Diameter	98.50mm	81.00mm	71.00mm
B • Height (w/o Cap)	215.50mm	174.50mm	141.00mm
C • Height (w/ Cap)	221.20mm	180.20mm	146.70mm
Units / Pack	12		24
Packs/Case (Total Units)	4(48)	6(72)	4(96)



Leakproof



Optically Clear



Shatterproof



Autoclavable



Gamma Radiated

\* All images are for reference only, actual products might differ from the pictures above.  
\* Technical specifications subject to change without notice.

