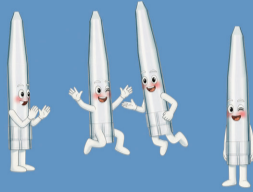


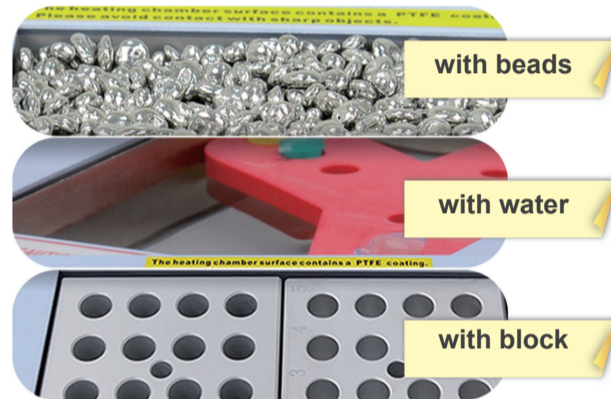
Elite Dual Dry Bath Incubator

EL-01DT and EL-02DT Series

- 4.3" Color Touch Panel for instant observation
- Dual temperature control slot for individually control temperature
- Digital microprocessor controller confers performance and precise control
- Multiple blocks for convenient replacement, easy to clean and disinfect
- Broad temperature control range & guaranteed uniformity
- Excellent heating rate
- User temperature calibration
- Can be used as a water bath or bead bath
- Molded aluminum alloy chamber
- Optional PC Control software available
- Compact design
- Customized blocks is available



Cat. No.	EL-01DT-110	EL-01DT-220	EL-02DT-110	EL-02DT-220
Voltage	110V, 50/60Hz	220V, 50/60Hz	110, 50/60Hz, T5A	220, 50/60Hz, T2.5A
Display	4.3" Color Touch Panel			
Power	250W		400W	
Controller	Digital microprocess controller			
Heating chamber	Molded waterproof aluminum alloy coated with PTFE			
Temperature control range	5°C above ambient to 150°C			
Temperature increment	0.1°C			
Timer	9999(min) / Continuous			
Operating temperature	Ambient to 40°C			
Block material	Aluminum alloy			

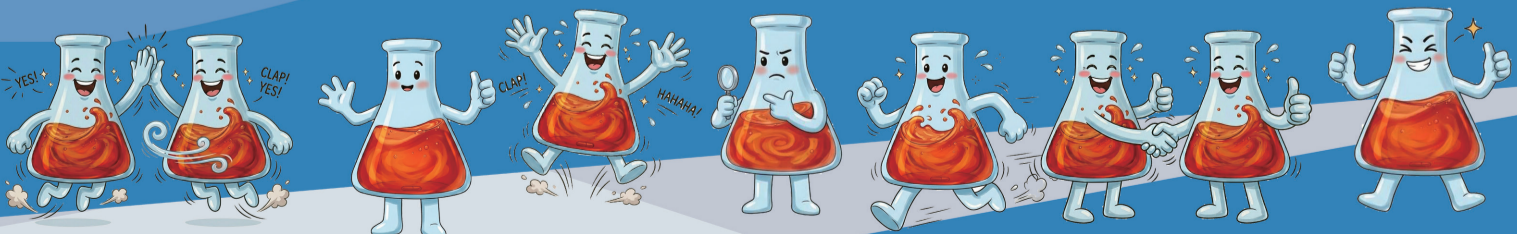


10L / 20L Stirring Water Bath

SWB Series

Cat. No.	SWB-10LT-1	SWB-10LT-2	SWB-20LT-1	SWB-20LT-3
Display	4.3" Color Touch Panel			
Voltage	110V/220V, 50/60Hz			
Power	600W		800W	
Number Of Stirring Mechanisms	1	2	1	3
Controller	Digital microprocess controller			
Bath Tank Material	304 stainless steel			
Stirring speed	400-1500rpm			
Temperature control range	5°C above ambient to 99°C			
Temperature increment	0.1°C			
Temperature uniformity	± 0.2°C at 37°C			
Temperature Calibration	yes			

- Microprocessor control with digital performance for precise, accurate control
- Stirring speed control
- 4.3" Color Touch Panel shows temperature and timer simultaneously
- User temperature calibration
- Safety device: warning indication on screen to avoid overheating and automatic shut down
- Multiple stirring mechanism capability
- Built-in magnetic stirring mechanism for water agitation, water temperature uniformity and medium solution mixing



* All images are for reference only, actual products might differ from the pictures above.
* Technical specifications subject to change without notice

