

version 1.0



# 2023-2024 BROCHURE

*SIP Fermentation System*



(Pilot Scale)

# SIP Fermentation System / Bioreactor

\* Customized vessel is available

30L / 50L System

Motor  
Manual or automatic control of constant agitation speed

Peristaltic Pump  
Uses four Watson Marlow built-in peristaltic pumps for all your feeding needs

Control Station  
Large screen and graphical user interface

Stainless Steel Vessel  
Special designed heating jacket provides better heating efficiency



FS-30L(130x95x275 cm)

\* ASME standard



FS-50L

FS-50L  
(130x95x295 cm)

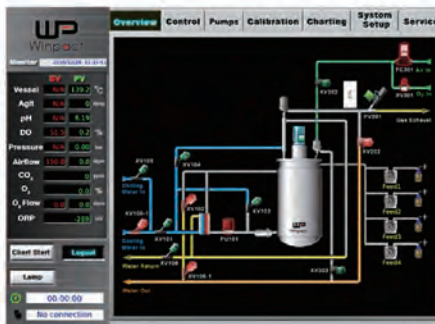
### Features

- Wide range of vessel selection, from 30L to 50L working volume
- Colorful interface at 10.4" or above
- Fully automated process with remote monitoring
- 15-step automatic program setting
- Orbital welding ensures minimal residue buildup
- Highest grade construction with 316L stainless steel
- Jacket design provides astounding temperature control
- Exhaust pressure relief valve for maximum safety precaution
- Multiple safety design integration for peace of mind operation
- Remote monitoring & controlling software free from purchase
- Password protection for multiple users with special requirements
- Various optional devices for process optimization and needs
- Ethernet communication with Winpact SCADA software, and IP address



Four-staged DO cascade

15-Step programmable PID control



Immediate visualization on operation overview



Easy and intuitive operation for manual and sequence control



One-Touch automatic sterilization for vessel and system tubing



Online system calibration with system feedback



System expansion with various optional devices

SIP Fermentation System / Bioreactor (Pilot Scale)



Mechanical seal with auto generated lubricant and automatic cooling device

Harvest valve Sanitary level diaphragm type



Detachable aseptic feeding device



(Approx. 170Wx130Dx245H cm, Open distance of headplate lift : 60 cm)

100L System



Pump



Winpact

Winpact offers pilot and production scale bioreactor/fermentation systems for all of your large scale fermentation needs. Our standard SIP Production Scale Fermentation System is constructed with BPE standard piping with orbital welding and top grade automatic valves to allow stable and repeatable result for every experiment. All of our features are designed to provide a high level of productivity and automation while maintaining a low operation cost. All other great features including total sterilization process, mechanical seal break indication, golden vessel ratio design and complete selection of optional devices for optimizing the fermentation process.



\* Operating ladder is optional.



200L System

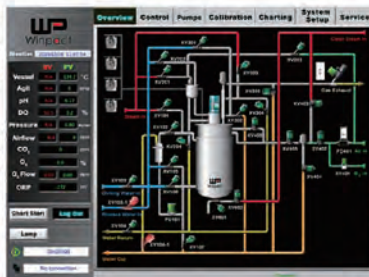
(Approx. 200Wx150Dx330H cm, Open distance of headplate lift : 40 cm)

Features

- Wide range of vessel selection, from 100L to 1000L working volume
- Multi-lingual 12" colored graphical control interface
- Fully automated process with remote monitoring
- 15-step automatic program setting
- Orbital welding ensures minimal residue buildup
- Highest grade construction with Stainless Steel SUS316L
- Hive jacket design provides astounding temperature control
- Exhaust pressure relief valve for maximum safety precaution
- Multiple safety design integration for peace of mind operation
- Remote monitoring & controlling software free from purchase
- Password protection for multiple users with customized access levels
- Various optional devices for process optimization and needs
- Ethernet communication with Winpact SCADA software, and IP address



- Pneumatic valves for accurate and automatic control
- Orbital welding provides top quality



Monitor page for operation overview



Automatic and manual operation



Automatic sterilization process



Online system calibration

**(Production Scale)**

\*For system over 200L, please contact Major Science or authorized distributors for more information.



**500L System**



**1000L System**



**5000L System**



[www.majorsci.com](http://www.majorsci.com)

[info@majorsci.com](mailto:info@majorsci.com)



#### Taiwan Headquarters

##### Headquarters:

No. 156, Sec. 1, Guoji Rd., Taoyuan Dist.,  
Taoyuan City 33061, Taiwan  
T/+886-3-3762878  
F/+886-3-3761310

##### Factory:

No.19, Ln. 207, Huakang St. Bade Dist.,  
Taoyuan City 33464 Taiwan  
T/ +886-3-3623319  
F/ +886-3-3623133  
Email : [info@majorsci.com](mailto:info@majorsci.com)

#### Shanghai Office

Room 612, International business exhibition center,  
9300 Hunan Road, Pudong, Shanghai, China  
National toll-free No.:400-823-9177  
T/ +86-21-50795277  
F/ +86-21-50795277

#### US Office

19959 Sea Gull Way  
Saratoga, CA 95070  
U.S.A.  
T/ +1-408-366-9866  
F/ +1-408-446-1107

#### India Office

D. No. 12-13-99, Satguru Apts. Extn.  
Street. No. 3, Lane No.1, Tarnaka  
Secunderabad – 500 017. India  
T/ +91-40-27001515  
T/ +91-40-27001586

