



# 2018 Catalogue



 **major  
science**  
*Innovative Life Sciences Tools*

**SIP Fermentation  
Systems (Production)**

## SIP (Production Scale) Fermentation System

Winpact offers pilot and production scale bioreactor/fermentation systems for all of your large scale fermentation needs. Our standard SIP Production Scale Fermentation System is constructed with BPE standard piping with orbital welding and top grade automatic valves to allow stable and repeatable result for every experiment. All of our features are designed to provide a high level of productivity and automation while maintaining a low operation cost. All other great features including total sterilization process, mechanical seal break indication, golden vessel ratio design and complete selection of optional devices for optimizing the fermentation process.

### Features

- Wide range of vessel selection, from 100L to 1000L working volume
- Multi-lingual 12" colored graphical control interface
- Fully automated process with remote monitoring
- 15-step automatic program setting
- Orbital welding ensures minimal residue buildup
- Highest grade construction with Stainless Steel SUS316L
- Hive jacket design provides astounding temperature control
- Exhaust pressure relief valve for maximum safety precaution
- Multiple safety design integration for peace of mind operation
- Remote monitoring & controlling software free from purchase
- Password protection for multiple users with customized access levels
- Various optional devices for process optimization and needs
- Ethernet communication with Winpact SCADA software, and IP address



200L

Detachable aseptic feeding device

Harvest valve Sanitary level diaphragm type tank bottom valve

Pump



Mechanical seal with auto generated lubricant and automatic cooling device



- Pneumatic valves for accurate and automatic control



- Orbital welding provides top quality

\* Customized vessel is available



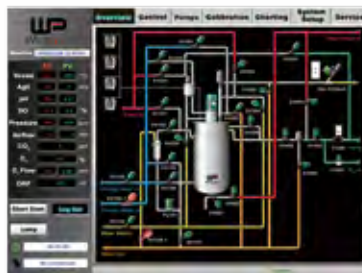
**100L**

**500L**

**1000L**

<b>Capacity</b>	100L	200L	500L	1000L
<b>Total Volume</b>	120L	268L	700L	1500L
<b>Working Volume</b>	100L	200L	500L	1000L
<b>Vessel And Jacket Maximum Working Pressure</b>	3 bar (43.5 psig) / 3 bar (43.5 psig)			
<b>Type</b>	Double layered fully enclosed capsule-type tank, with an outer temperature protective layer			
<b>Material</b>	Direct contact to medium - 316L stainless steel; all others - 304 stainless steel			
<b>Surface Finish</b>	Interior polish ≤5 Ra/in (0.6 μm) Mechanical polishing; Electropolish optional Exterior polish ≤32 Ra/in (0.8 μm) Mechanical polishing; Electropolish optional			

\* For bigger capability system, please contact Major Science and/or our distributor partners.



Monitor page for operation overview



Automatic and manual operation



Automatic sterilization process



Online system calibration

## US Office

19959 Sea Gull Way  
Saratoga, CA 95070  
U.S.A.  
T/ +1-408-366-9866  
F/ +1-408-446-1107

## Taiwan Office

No.19, Ln. 207, Huakang St.  
Bade Dist., Taoyuan City 33464  
Taiwan  
T/ +886-3-3623319 / +886-2-2298-1055  
F/ +886-3-3623133 / +886-2-2299-7871

## Shanghai Office

Room 612, International business exhibition center,  
9300 Hunan Road, Pudong, Shanghai, China  
National toll-free No.:400-823-9177  
T/ +86-21-50795277  
F/ +86-21-50795277

## India Office

D. No. 12-13-99, Satguru Apts. Extn.  
Street. No. 3, Lane No.1, Tarnaka  
Secunderabad – 500 017. India  
T/ +91-40-27001515  
T/ +91-40-27001586



[www.majorsci.com](http://www.majorsci.com)  
[info@majorsci.com](mailto:info@majorsci.com)

