



2018 BROCHURE



MS Pipette



New Products

ArdyBio Centrifuge

NEW

AB-MC8

AB-MC24

AB-PC

AB-MC12


Cat. No	AB-MC8	AB-MC12	AB-MC24	AB-PC
Maximum Capacity	8*0.5/2ml centrifuge tubes or 16*PCR tubes	12*0.5/2ml centrifuge tubes	24*0.5/2ml centrifuge tubes	2*96 well PCR Plates
Max. speed	7200 rpm	14500 rpm	14800 rpm	2500 rpm
Max. RCF	2350 g	14,000 g	16,300 g	500 g
Dimensions (WxLxH) (mm)	150x100	220x180x150	230x210x150	190x220x186
Weight	1.5 kg	6 kg	8 kg	2.1 kg
RPM/RCF conversion display	no	yes	yes	no
Timer	-	15 seconds to 99 minutes	15 seconds to 99 minutes	-
Features	For quick spin-down	Space-efficient	High capacity and high rotational speed	For 96 well PCR plate quick spin-down

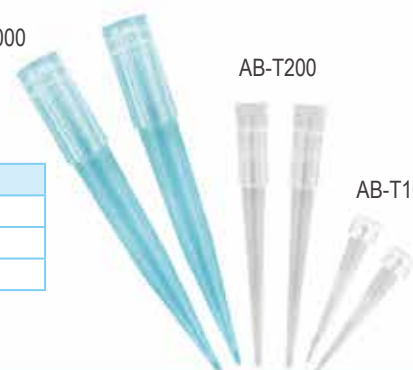


ArdyBio Tip

NEW

AB-T1000
AB-T200
AB-T10

Cat. No	Description
AB-T10	ArdyBio Tip 10ul
AB-T200	ArdyBio Tip 200ul
AB-T1000	ArdyBio Tip 1000ul



Blotting / Special Application

 <p>MSD series</p> <p>Semi Dry Mini and Semi Dry Midi</p>	 <p>MCOM series</p> <p>Comet Assay Tanks</p>	 <p>ME-CELLAS</p> <p>Cellulose Acetate Electrophoresis</p>	 <p>MDHM & MSHM series</p> <p>Dot and Slot Blotters</p>
 <p>MIEF</p> <p>Flatbed IEF System</p>	 <p>MGM series</p> <p>Gradient Formers</p>	 <p>MS-COOLCUBE</p> <p>Cool Cube</p>	 <p>MG series</p> <p>Midi Gel Dryer</p>

Semi Dry Mini and Semi Dry Midi

Cat. No.	MSD10	MSD20
Dimension (mm)(WxLxH)	160x160x70	260x260x70
Gel dimension (mm)(WxL)	100x100	200x200
Maximum sample (mm)	1 Blot, 80x85	1 Blot, 160x175
		2 Blots, 160x85
		4 Blots, 80x85
Buffer volume	5ml	20ml
Accomodate gel thickness	0.25-10mm	
Economic transfer	Yes	



Four pairs of outlet terminals

MS Pipette **NEW**



3-position tip ejector button (left/right handed users)



Pipette Stand, with additional alcohol sprayer

MSP-ST02

180° spray head



MSP Series

- Light weight
- Soft spring system for extremely low pipetting forces
- Controlled volume setting to prevent accidental volume changes
- Different color coded push button for different volume
- Contoured shape: fits either small or large hands
- Large pushbutton, rounded and freely rotating
- Finger hook: takes the weight, for a more relaxed grip
- Easy on site calibration (calibration key included)
- High accuracy and precision
- A unique serial number
- UV resistance even under prolonged exposure
- Fully autoclavable (121°C/0.1MPa/20 min)



Ordering Information

Cat. No	Description
MSP-2	MS pipette, variable volume 0.2~2µl
MSP-10	MS pipette, variable volume 1~10µl
MSP-20	MS pipette, variable volume 2~20µl
MSP-100	MS pipette, variable volume 10~100µl
MSP-200	MS pipette, variable volume 20~200µl
MSP-1000	MS pipette, variable volume 100~1000µl
MSP-5000	MS pipette, variable volume 500~5000µl
MSP-10000	MS pipette, variable volume 1000~10000µl
MSP-8X10	MS 8-ch pipette, variable volume 0.5~10µl
MSP-8X20	MS 8-ch pipette, variable volume 2~20µl
MSP-8X200	MS 8-ch pipette, variable volume 20~200µl
MSP-8X300	MS 8-ch pipette, variable volume 20~300µl
MSP-12X10	MS 12-ch pipette, variable volume 0.5~10µl
MSP-12X20	MS 12-ch pipette, variable volume 2~20µl
MSP-12X200	MS 12-ch pipette, variable volume 20~200µl
MSP-12X300	MS 12-ch pipette, variable volume 20~300µl
MSP-ST02	Pipette Stand, with additional alcohol sprayer



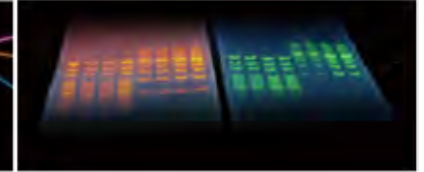
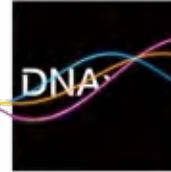
Thermal Cycler

Major Cycler

CE



Self pressure adjusting hot lid



25 (5x5) x0.2ml tube

Cat. No.	CYCLER-25
Display	2.6" LCD
Sample capacity	25(5x5)x0.2ml tube
Temperature control range	4°C to 110°C
Heating and cooling rate	approx. 3°C / s, 2°C / s
Program	Reverse transcription program
	Link program: multi-loop available; up to 5
	Step per Loop: up to 9
	Cycle number: up to 99
	Program storage: up to 100
	Increment and decrement temperature per step on each cycle
Rated voltage	110V / 220V selectable
Dimension (mm)(WxLxH)	200x320.5x190

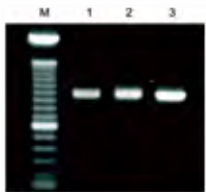




Fig.2 Reverse transcription and amplification of 900bp Japanese Encephalitis Virus (JEV) envelope protein fragment from JEV RNA using Major Cycler RT and amplification program
M. DNA marker
1. 0.1µg RNA template
2. 0.5µg RNA template
3. 1.0µg RNA template

PCR workstation

UV Sterilization Cabinet / Mini UV Sterilization Cabinet



CE

	MS-UVCAB	MS-UVCABMINI
Cat. No.		
UV light	4x15W	4x15W
White light	15W	15W
Dimension (mm)(WxLxH)	560x420x770	560x350x510
Weight	19Kg	12Kg
Cabinet material	Acrylic	



General purpose tray (Optional)



*All technical specifications are subject to change without notice.

*Please visit our website at www.majorsci.com for more product selection and detailed information.

US Office

19959 Sea Gull Way
Saratoga, CA 95070
U.S.A.
T/ +1-408-366-9866
F/ +1-408-446-1107

Taiwan Office

No.19, Ln. 207, Huakang St.
Bade Dist., Taoyuan City 33464
Taiwan
T/ +886-3-3623319
F/ +886-3-3623133

Shanghai Office

Room 612, International business exhibition center,
9300 Hunan Road, Pudong, Shanghai, China
National toll-free No.:400-823-9177
T/ +86-21-50795277
F/ +86-21-50795277

India Office

D. No. 12-13-99, Satguru Apts. Extn.
Street. No. 3, Lane No.1, Tarnaka
Secunderabad – 500 017. India
T/ +91-40-27001515
T/ +91-40-27001586



www.majorsci.com
info@majorsci.com